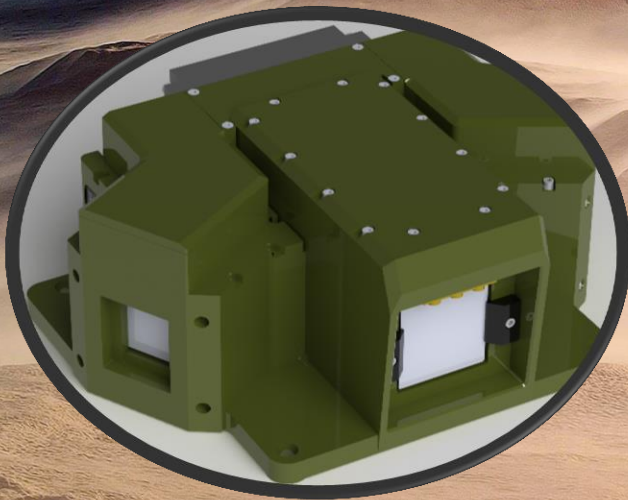


CORIS DS - CFTC

Day and Thermal Fusion Driver Sight



CORIS DS – CFTC is a compact Driver Sight with Single Fusion Camera that uses ingenious optical design to minimise parallax errors without compromising the Fused Day and Thermal video image quality.

It facilitates safe driving and navigation under adverse weather, foggy, hazy and poor visibility conditions.

KEY FEATURES

- Small and compact, suitable for use on all type of vehicles
- Negligible parallax errors due to State-of-the-art optics for fusion
- Ruggedized to MIL-STD for use on all military wheeled and tracked vehicles

APPLICATIONS



Safe Driving and Navigation for all type of vehicles, including security, logistics, emergency and military vehicles.

CORIS DS CFTC SPECIFICATIONS

Thermal Camera	
Detector Type	Uncooled Microbolometer
Spectral Bandwidth	8 to 12 μm
Array Size	640 x 480 pixels
Pitch Size	17 μm
Field of View	64° x 48°
Video Polarity	Black Hot/White Hot
NUC	Auto/Manual
Day Camera	
Minimum Illumination	≤ 0.005 lux
Field of View	64° x 48°
Power and Connectivity	
Input Voltage	24 to 28 VDC
Power Consumption	≤ 20 Watts
Video Output	PAL/NTSC, SD-SDI
Communication Protocol	RS-422
Environment	
Operating Temperature	-10°C to 55°C
Storage Temperature	-20°C to 70°C
Standards Tested	MIL-STD-810G, MIL-STD-461E

STELOP PTE LTD

24 Ang Mo Kio Street 65
Blk D, 6th Floor
Singapore 569061

Tel: +(65) 6481 1801
Fax: +(65) 6403 2027
Email: stelop-info@stelop.com
www.stelop.com